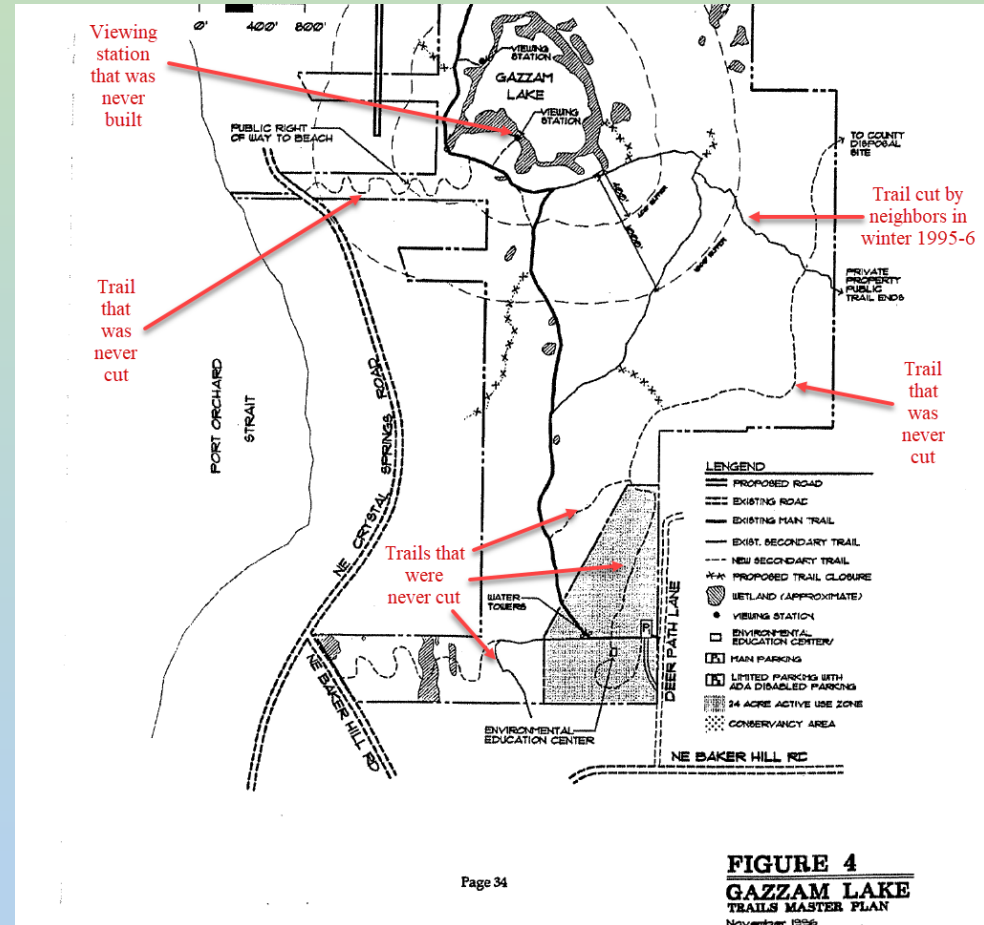


# Where did the mystery trail on the east side of Gazzam Lake Preserve come from?

The mystery trail discussed in this presentation was never planned in a public process by the Bainbridge Island Park District. It was apparently cut by Gazzam neighbors. Yet the Park District doesn't show that it should be closed as a "social" trail – a trail that was cut by neighbors.

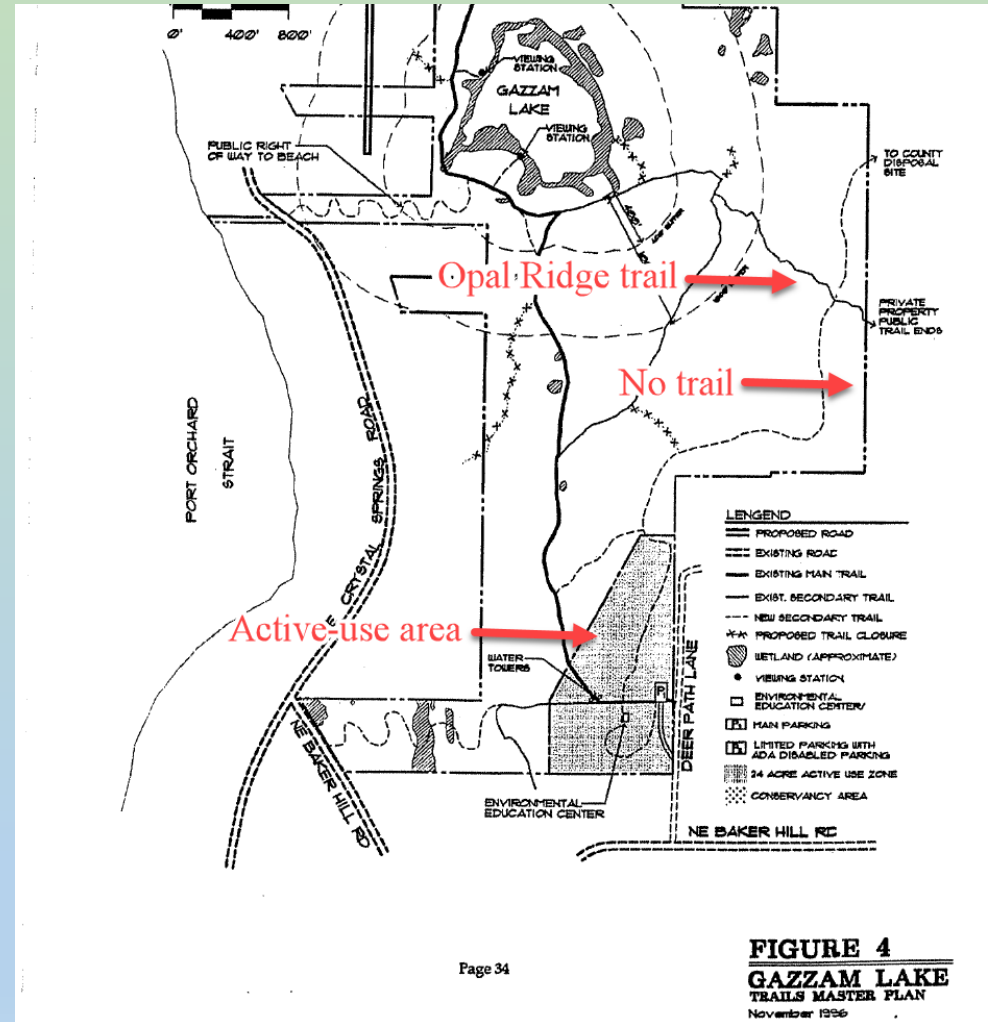
# 1996 Gazzam Lake Draft Master Trail Plan

The Gazzam Lake Draft Master Trail Plan, which the Park District released in 1996, was a wish list that included plans for trails that were never cut and a viewing station that was never developed.



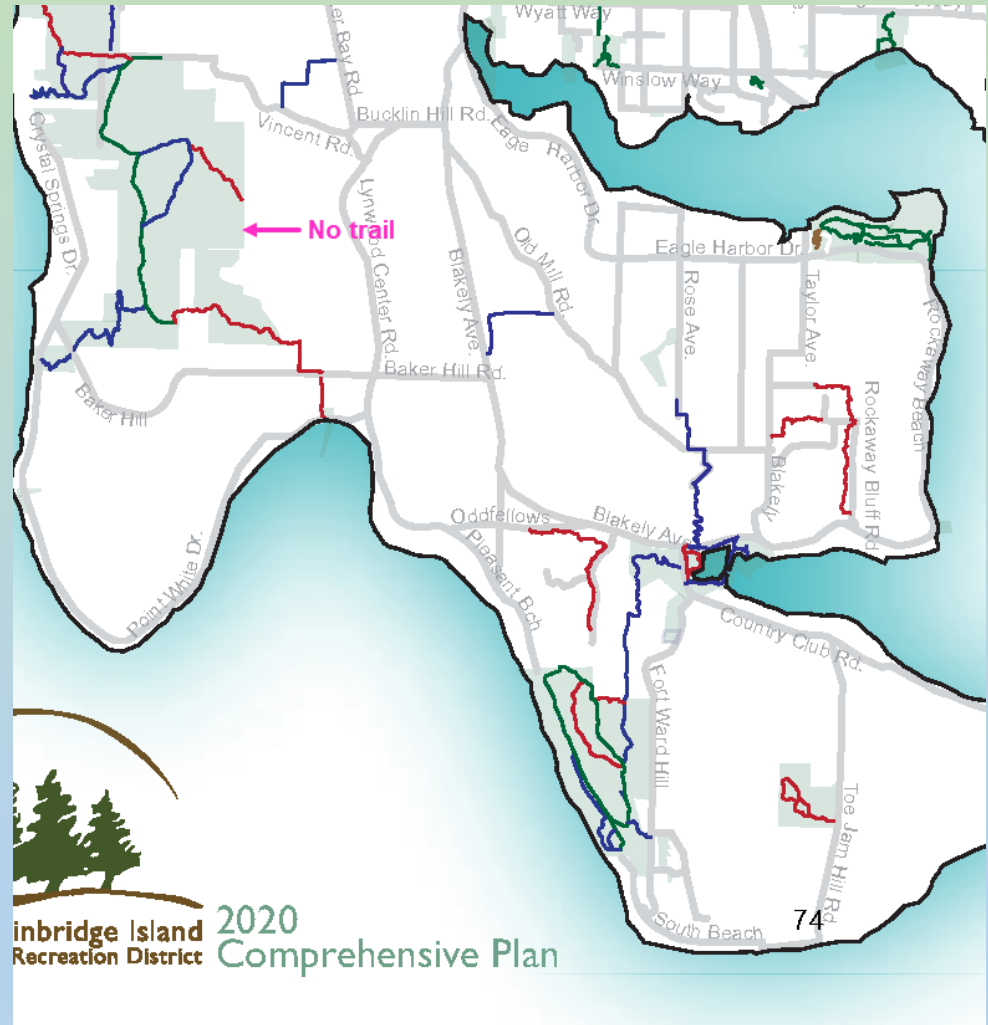
# 1996 Gazzam Lake Draft Master Trail Plan

The 1996 Gazzam Lake Draft Master Trail Plan didn't show the mystery trail on the east side of Gazzam Lake Preserve, but it did show the Opal Ridge trail, which neighbors of the Gazzam preserve cut in the winter of 1995-96. The mystery trail south of Opal Ridge trail is outside the active-use area at the southeast corner of the Gazzam preserve, which was never developed for active use.



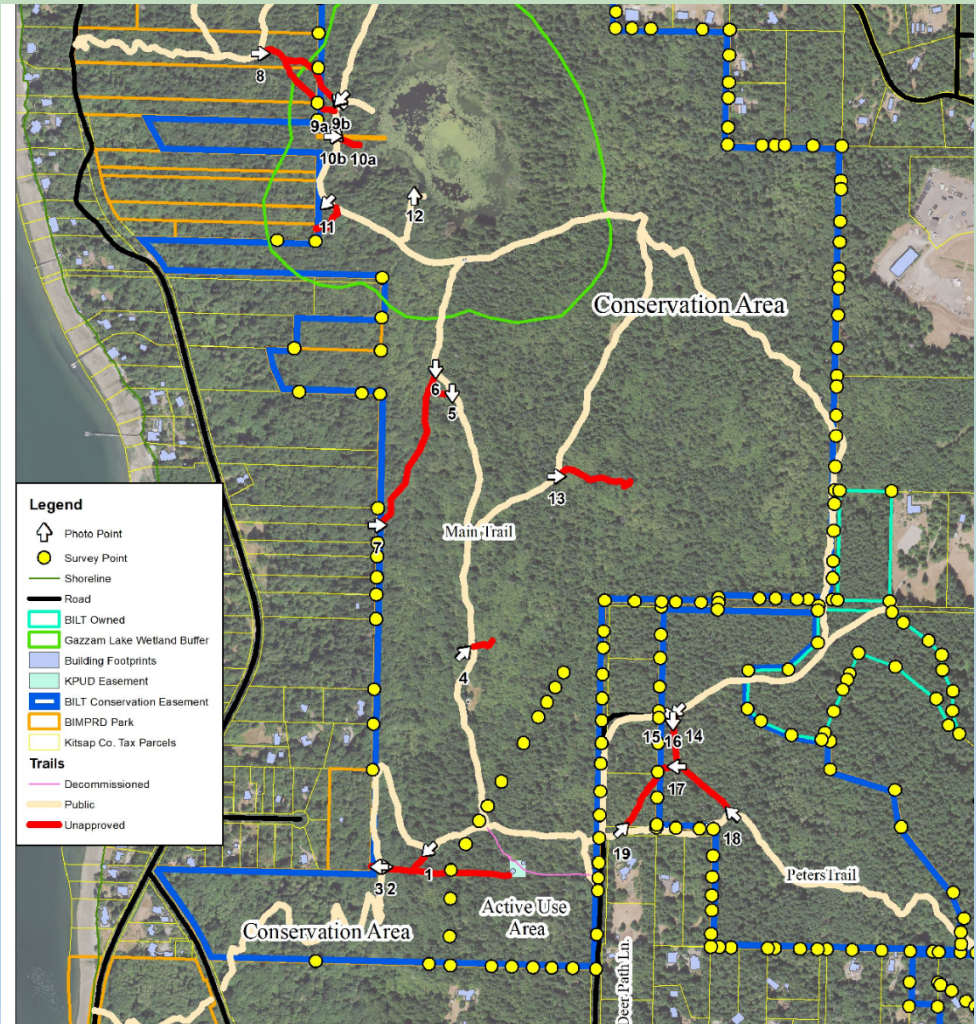
# 2020 Gazzam Lake Trail Inventory

The Park District's 2020 Gazzam Lake Preserve trail inventory didn't show the mystery trail on the east side of Gazzam Lake Preserve, though it did show the Opal Ridge trail. No other Park District map of approved trails at Gazzam has ever shown this mystery trail.



# 2023 Gazzam and Peters Social Trail Assessment

The Park District's Gazzam and Peters Social Trail Assessment released in 2023 listed the mystery trail as a "public trail" -- as if it was approved like other official trails at Gazzam.

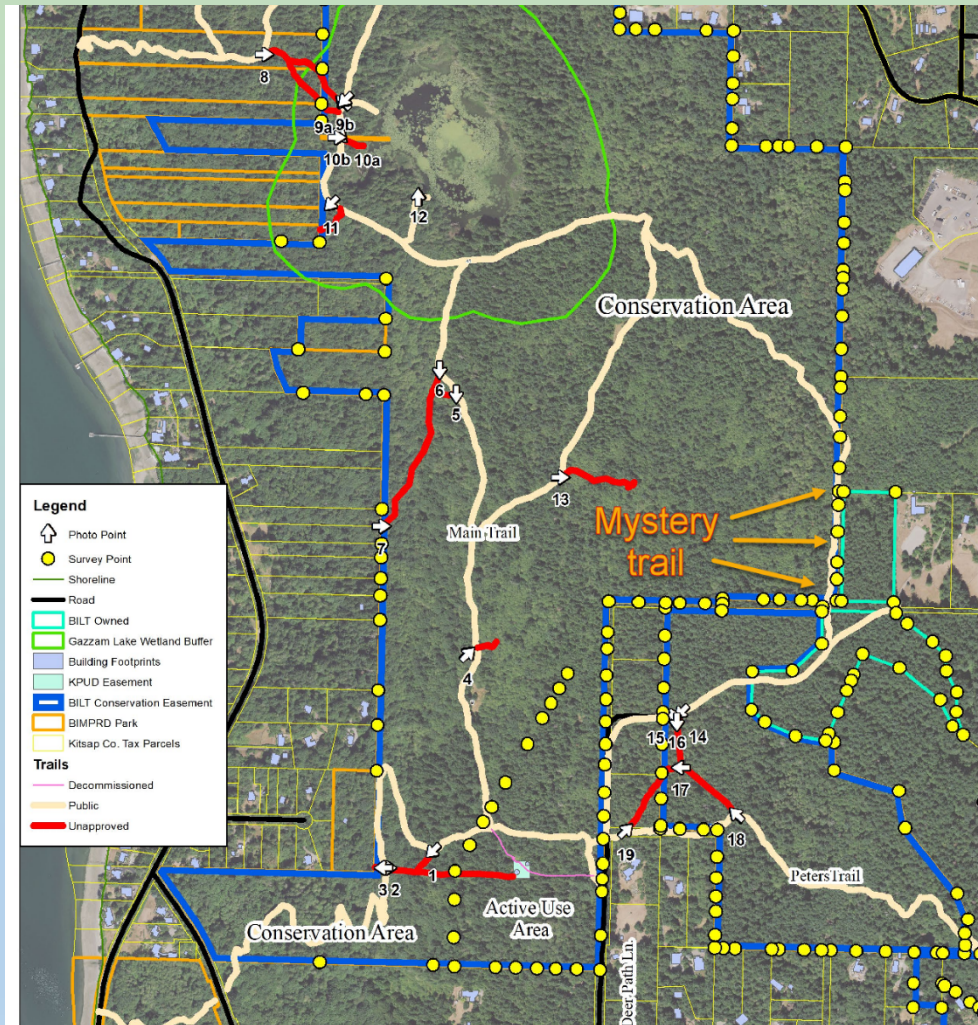




# 2023 Gazzam and Peters Social Trail Assessment

The Park District's Gazzam and Peters Social Trail Assessment released in 2023 lists the mystery trail as an approved "public trail" even though:

- No Park District map has ever shown it
- It was never planned in a public process, and
- It's inside the preserve's boundaries.

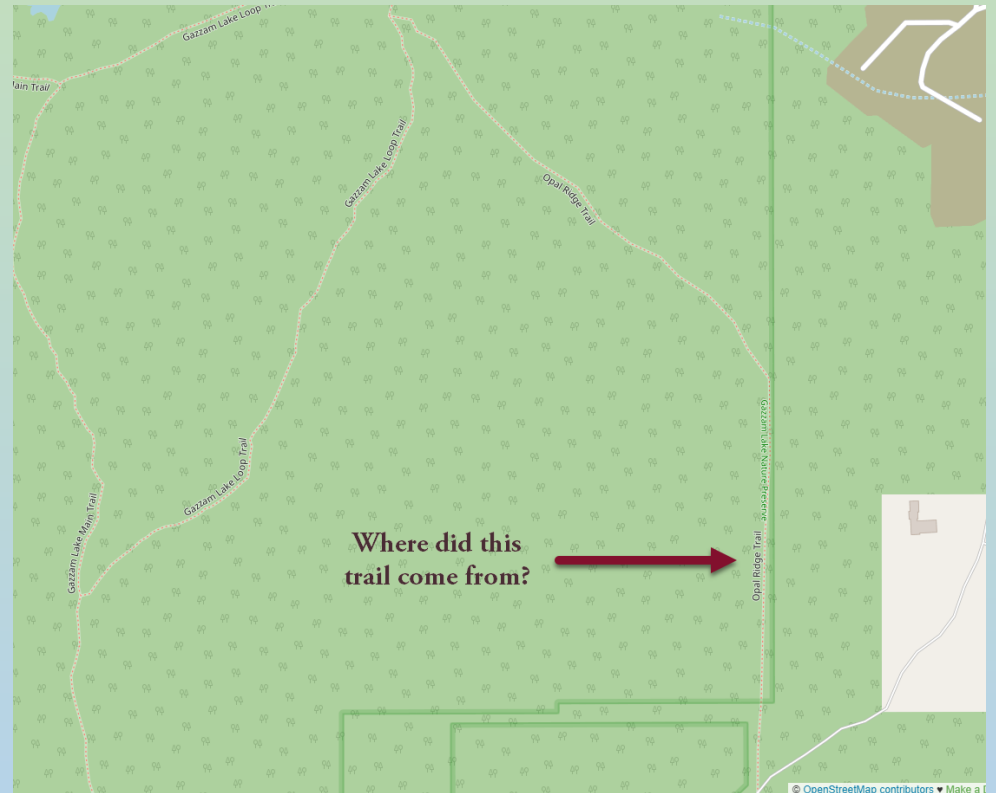


# The mystery trail is inside Gazzam Lake Preserve

According to the highly accurate open-source site OpenStreetMap, the mystery trail on the east side of Gazzam Lake Preserve is inside the park's boundaries.

Its URL on OpenStreetMap is:

<https://www.openstreetmap.org/#map=19/47.614937/-122.558413>



# BIPTF wants to use the mystery trail in its cross-island trail

The Bainbridge Parks and Trails Foundation's presentation to COBI claimed it would use only "dedicated trails, easements, and road ROWs" in the Winslow-to-Gazzam Lake cross-island trail. BIPTF wants to use the mystery trail as a link its cross-island trail. Yet the mystery trail is not a dedicated trail, easement, or road right-of-way.





# The mystery trail was cut with power tools

The mystery trail on the east side of the Gazzam Lake Preserve was deliberately cut with power tools. Its south end starts on a private driveway.



# The mystery trail is wide enough to ride a horse

The mystery trail is at least 6 feet  
wide in places: easily wide  
enough for a horse and rider.

