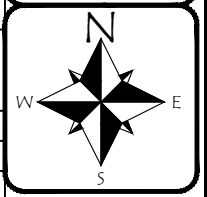
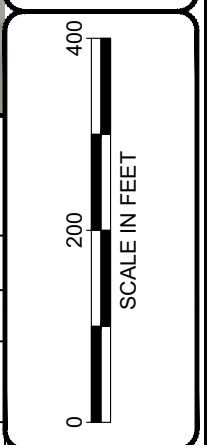


Figure 8
WETLAND RATING FORM-150 OFFSET
 Gazzam Lake Parking Lot and Trail Expansion
 Bainbridge Metro Parks and Recreation District
 City of Bainbridge Island, Kitsap County, Washington
 Section 29 & 32, Township 25N, Range 2E, W.M.

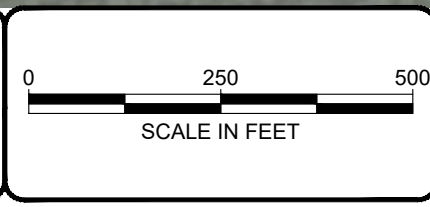
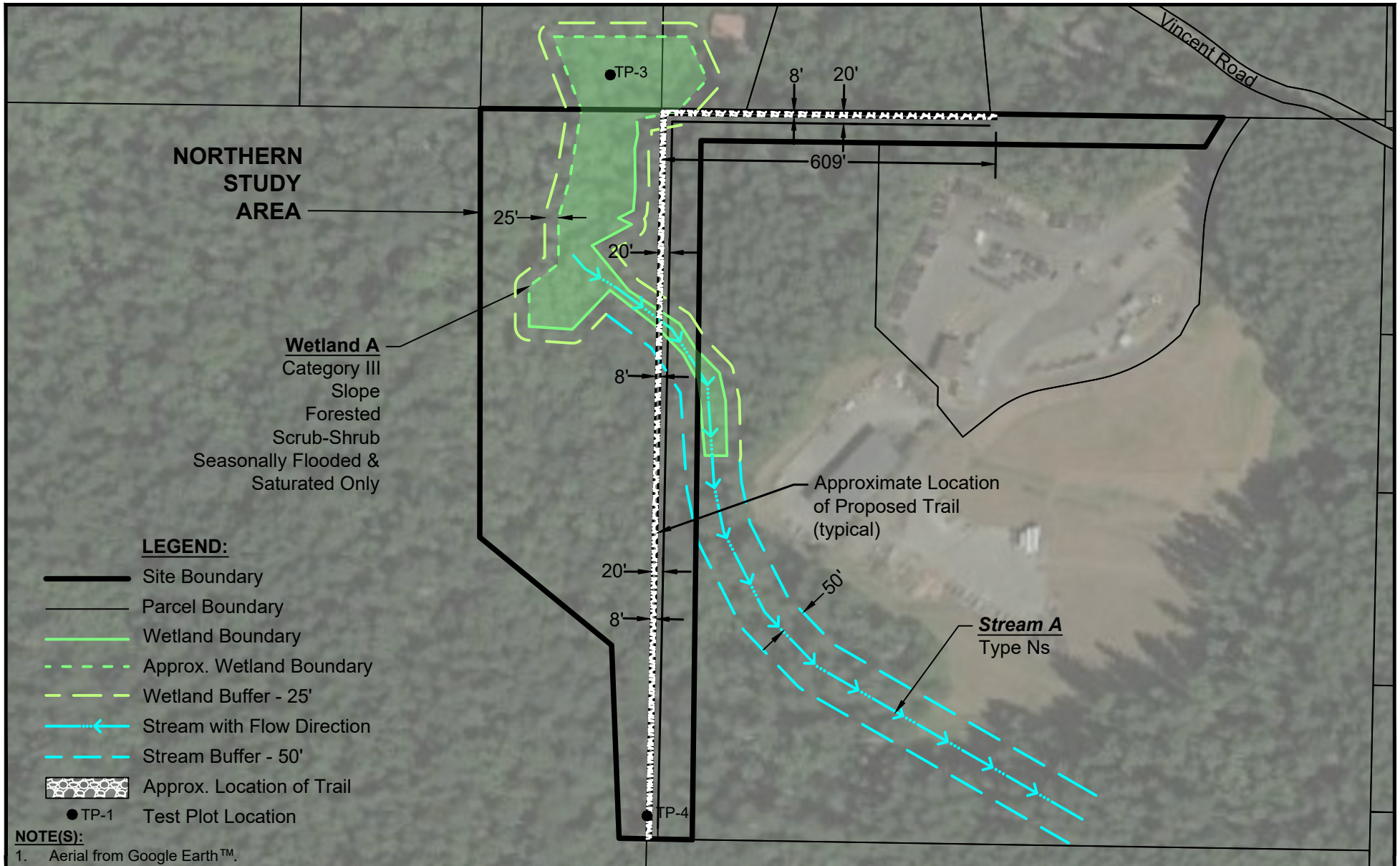
DATE: 7/23/21
 DWN: CDP
 REQ. BY: JB
 PRJ. MGR: JB
 CHK: JLL
 PROJECT NO:
 2248.08

1157 3rd Ave., Suite 220A
 Longview, WA 98632
 Phone: (360) 578-1371
 Fax: (360) 414-9305
 www.eco-land.com

Ecological Land Services



Rating Question	Description	Answer - Wetland A
S 1.3	Plant cover of trees, shrubs and herbs	Dense, woody plants cover >1/2 the area
S 2.1	Boundary of area w/in 150' of the wetland-land uses that generate pollutants	<10% of the area within 150' in land uses that generate pollutants
S 4.1	Characteristics of slowing water flow	<90% of area has dense, uncut, rigid vegetation
S 5.1	Boundary of area w/in 150' of the wetland-land uses that generate excess runoff	>25% of area within 150 feet upslope in land uses or cover that generates excess runoff
H 1.1	Cowardin Plant Classes	Forested & Forested w/3 canopy layers
H 1.2	Hydroperiods	Saturated only
H 1.4	Interspersion of habitats	No interspersion of habitats



1157 3rd Ave., Suite 220A
Longview, WA 98632
Phone: (360) 578-1371
Fax: (360) 414-9305
www.eco-land.com

DATE: 7/23/21
DWN: CDP
REQ. BY: JB
PRJ. MGR: JB
CHK: JLL
PROJECT NO:
2248.08

Figure 3a
NORTHERN STUDY AREA - PROPOSED CONDITIONS
Gazzam Lake Parking Lot and Trail Expansion
Bainbridge Metro Parks and Recreation District
City of Bainbridge Island, Kitsap County, Washington
Section 29 & 32, Township 25N, Range 2E, W.M.